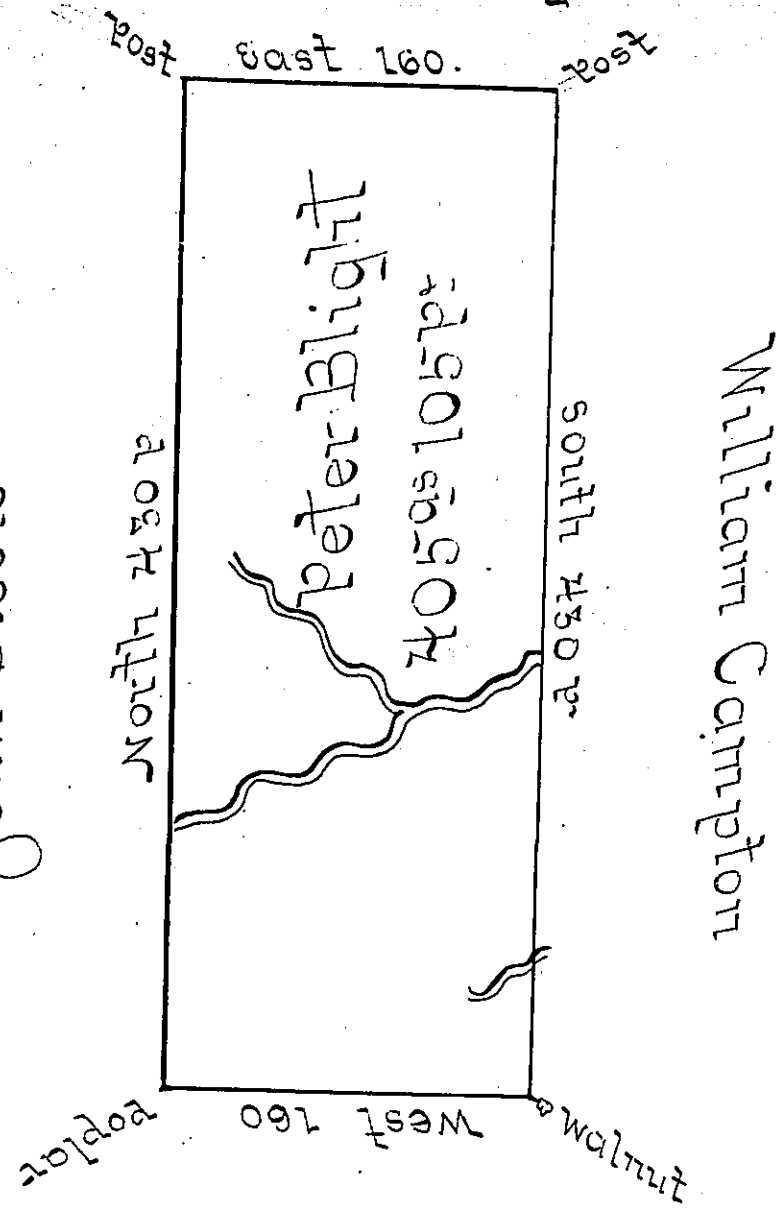


Page 261
John Biddle



John Biddle

Situated on the Waters of Chest Creek in Allegeny Township Huntingdon County: Containing 405 Acres & 105 Perches and allowance for Roads &c Surveyed the 4th day of Nov^r 1794 for Peter Blight on Warrant dated the 15th day of June 1795

John Canan D.S.

Daniel Brodhead Esq: S.S.

IN TESTIMONY that the above is a copy of the original remaining on file in the Department of Internal Affairs of Pennsylvania, made conformably to an Act of Assembly approved the 16th day of February, 1833, I have hereunto set my Hand and caused the Seal of said Department to be affixed at Harrisburg, this fourth day of June 1901.

James W. Fatta
Secretary of Internal Affairs.